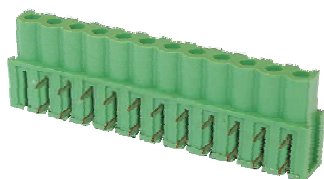
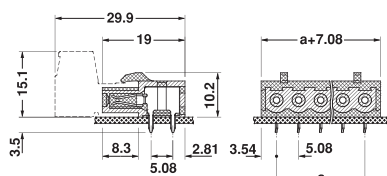


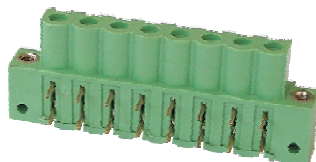
S 2.5IHG



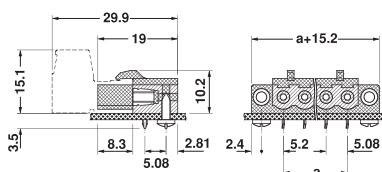
Pitch:5.08 mm



S 2.5IHF



Pitch:5.08 mm



IEC 数据	刚性导线 (mm ²)	柔性导线 (mm ²)	AWG	I (A)	U (V)
连接数据	\	\	\	12	250
绝缘材料组别				I	
污染等级				3	2
过电压类别				III	II
额定电压(V)				250	320
额定冲击电压(KV)				4	630
绝缘材料/阻燃等级 UL 94				PA/V0	
螺钉/扭矩(-Nm)				\	
剥线长度(mm)				\	
线路板孔径(mm)				Ø1.4	
引脚尺寸(mm)				1.3x0.7	

UL 数据	额定电压(V)/电流(A)	压线范围(AWG)
额定电压(V)/电流(A)	300/15	
压线范围(AWG)	\	

IEC	Rigid (mm ²)	flexible (mm ²)	AWG	I (A)	U (V)
Connection data	\	\	\	12	250
Insulating Material Group				I	
Pollution degree				3	2
Overvoltage Category				III	II
Rate Voltage(V)				250	320
Rate impulse Voltage(KV)				4	630
Insulating material/Inflammability Class				PA/V0	
Screw/Torque(-Nm)				\	
Stripping length(mm)				\	
PCB Hole Diameter(mm)				Ø1.4	
Pin Dimensions(mm)				1.3x0.7	

UL Technical Data	Rate Voltage(V)/Current(A)	Wire Range(AWG)
Rate Voltage(V)/Current(A)	300/15	
Wire Range(AWG)	\	

位数/No. of positions	订货型号/Order No.
2	S 2.5IHG-2-5.08
...	...
24	S 2.5IHG-24-5.08

IEC 数据	刚性导线 (mm ²)	柔性导线 (mm ²)	AWG	I (A)	U (V)
连接数据	\	\	\	12	250
绝缘材料组别				I	
污染等级				3	2
过电压类别				III	II
额定电压(V)				250	320
额定冲击电压(KV)				4	630
绝缘材料/阻燃等级 UL 94				PA/V0	
螺钉/扭矩(-Nm)				\	
剥线长度(mm)				\	
线路板孔径(mm)				Ø1.4	
引脚尺寸(mm)				1.3x0.7	

UL 数据	额定电压(V)/电流(A)	压线范围(AWG)
额定电压(V)/电流(A)	300/15	
压线范围(AWG)	\	

IEC	Rigid (mm ²)	flexible (mm ²)	AWG	I (A)	U (V)
Connection data	\	\	\	12	250
Insulating Material Group				I	
Pollution degree				3	2
Overvoltage Category				III	II
Rate Voltage(V)				250	320
Rate impulse Voltage(KV)				4	630
Insulating material/Inflammability Class				PA/V0	
Screw/Torque(-Nm)				\	
Stripping length(mm)				\	
PCB Hole Diameter(mm)				Ø1.4	
Pin Dimensions(mm)				1.3x0.7	

UL Technical Data	Rate Voltage(V)/Current(A)	Wire Range(AWG)
Rate Voltage(V)/Current(A)	300/15	
Wire Range(AWG)	\	

位数/No. of positions	订货型号/Order No.
2	S 2.5IHF-2-5.08
...	...
24	S 2.5IHF-24-5.08