

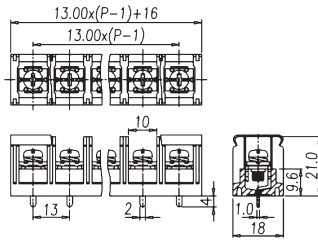
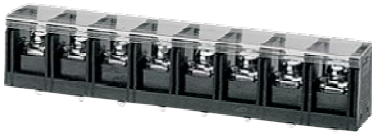
B 13
接线端子参数

额定电参数
压线范围
螺钉力矩
外壳
工频耐电压
绝缘抵抗
使用温度

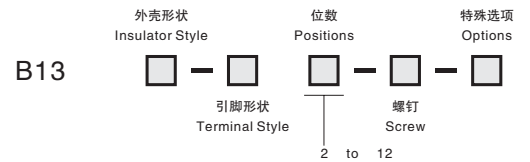
Rating
Wire Range
Screw/Torque Rating
Insulator Body
Insulation withstand Voltage
Insulation Resistance
Operating Temperature

600V, 40A
18~10 AWG
M4, 18Kgf c m
PBT, UL94 V0
AC2500, 1Min.
1000MΩ, DC500V
-40°C~+130°C

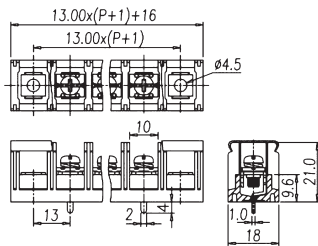
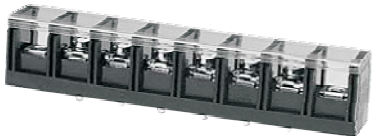
B 13C-H



How to Order



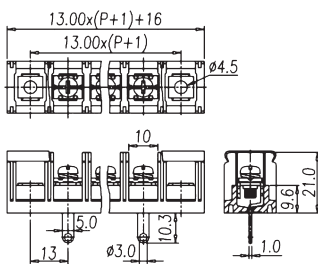
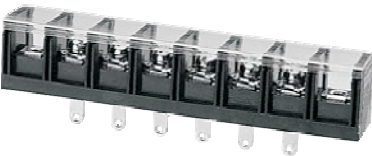
B 13CF-H



外壳形状
Insulator Style

-/C: 无/有上盖 Without/With Cover
-/F: 无/有端部安装耳 Without/With Mount end

B 13CF-HO



引脚形状
Terminal Style

见左图 See left drawing

螺钉
Screw

空白: 标准配置 Blank: Std. Screw

B 13C-VL

