

# Specifications

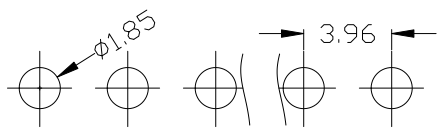
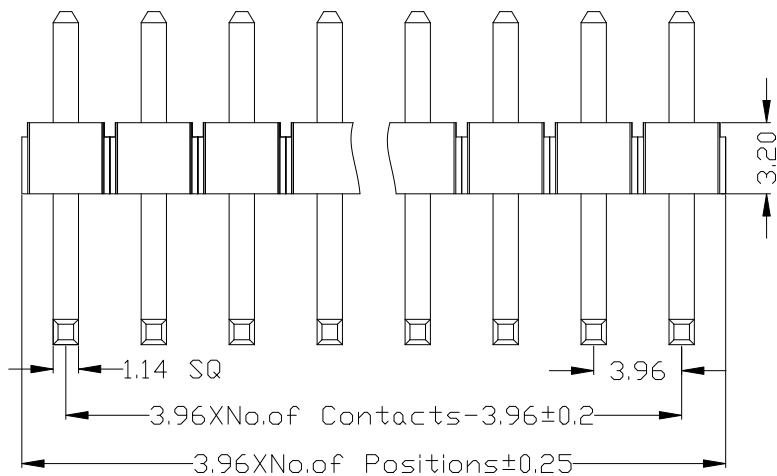
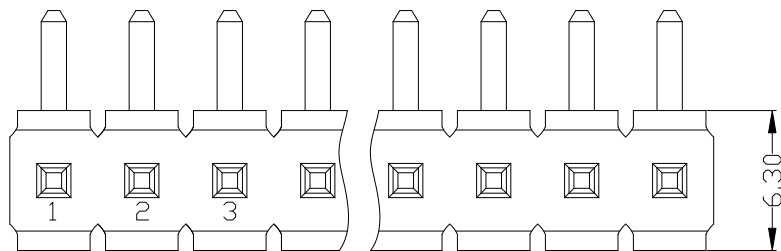
备注 (Remark)

## 1. 材料 (MATERIAL)

胶芯: LCP+30%G.F UL94V-0, 颜色: 黑色.  
 Housing: LCP+30%G.F UL94V-0, Color: Black  
 四方针: 黄铜, 镍底30u"MIN, 镀普通锡  
 Contact: Brass, ORDINARY TIN PLATED  
 30u" MIN NICKEL UNDERPLATING OVER ALL

## 2. 特性 (characteristics):

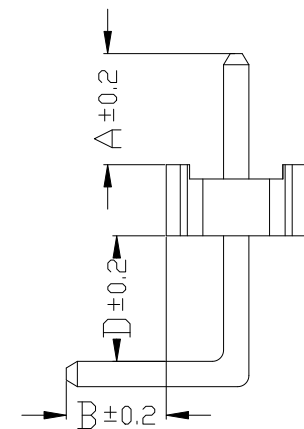
额定电流: 8 AMP  
 Raring Current: 8 AMP.  
 接触阻抗: 20 mΩ MAX.  
 Contact Resistance: 20 mΩ MAX.  
 绝缘阻抗: 1000 MΩ MIN.  
 Insulating Resistance: 1000 MΩ MIN.  
 耐电压: AC 500V.  
 Withstanding Voltage: AC 500V.  
 温度范围: -40°C to +105°C  
 Temperture Range: -40°C to +105°C



# Ordering Information

P732-11 XX XX D R XXXA X

HEIGHT OF HOUSING 32:3.2mm	NO. OF PINS PER ROW 1-30P	Contact Plating Full Of Gold A0=0.8u" A1=1u" A2=1.5u" A3=2u" A4=3u" A5=5u" A6=10u" A7=15u" A8=20u" A9=30u"	Semi-gold B0=0.8U" B1=1U" B2=1.5U" B3=2U" B4=3U" B5=5U" B6=10U" B7=15U" B8=20U" B9=30U"	INSULATOR MATERIAL: D:LCP	LENGTH OF TERMINAL	PACKING A:PE Bag B:Tape & Reel C:Tube D:Tube+CAP E:Tray
		S1=Ordinary Tin Plated S2=Matte Tin Plated S3=Tin-plated High-temperature				



Dimension antitheses list				
ITEM	A	B	D	
Standard	2.54	4.5	0.60	5.65
Alternate				

上海高霖电子有限公司

				OPERATION	SCALE	Fit				
				X.X ±0.25	UNIT	MM				
				X.XX ±0.20	SIZE	A4	DESIGN	卢小强	PART NO.	P732-11XXXXDRXXXX1
				X.XXX ±0.10	SHEET	1/1	CHECK	TITLE:	3.96mm 单排针 塑高3.2 90度	
				Angle ±3°	PROJ.	⊕	APPROVE	Customer No.		
REV	DATE	MODIFICATION DESCRIPTION	CHANGE	APPROVE	DIM	TOL				