

Specifications

备注(Remark)

1. 材料(MATERIAL)

胶芯: LCP+30%G.F UL94V-0, 颜色: 黑色
Housing: LCP+30%G.F UL94V-0, Color: Black

四方针: 黄铜, 镍底30u"MIN, 镀普通锡

Contact: Brass, ORDINARY TIN PLATED

30u" MIN NICKEL UNDERPLATING OVER ALL

2. 特性 (characteristics):

额定电流: 7 AMP

Rating Current: 7 AMP.

接触阻抗: 20 mΩ MAX.

Contact Resistance: 20 mΩ MAX.

绝缘阻抗: 1000 MΩ MIN.

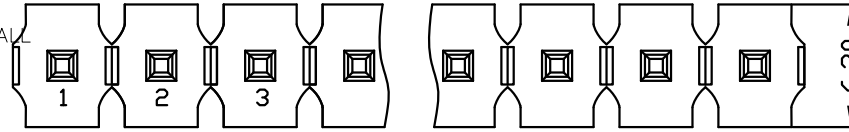
Insulating Resistance: 1000 MΩ MIN.

耐电压: AC 500V.

Withstanding Voltage: AC 500V.

温度范围: -40°C to +105°C

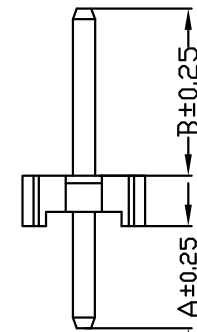
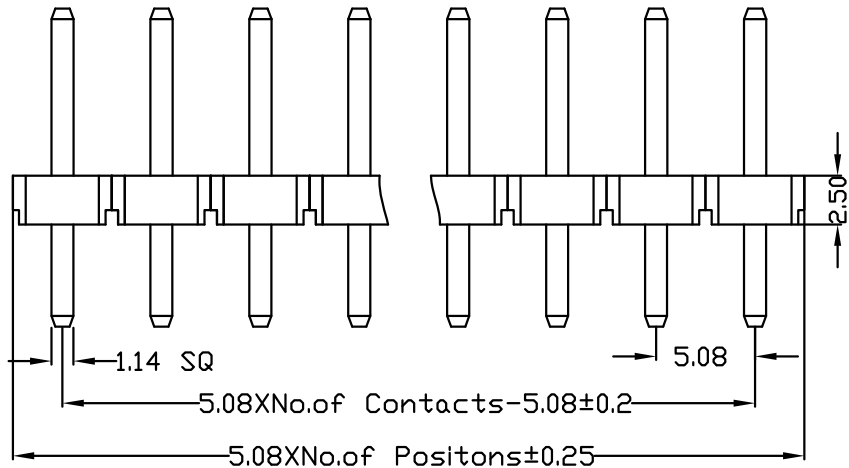
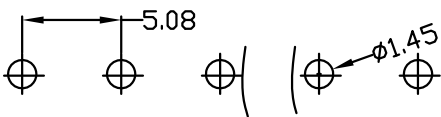
Temperature Range: -40°C to +105°C



Ordering Information

P825-11 XX XX D S XXX(A)

HEIGHT OF HOUSING	NO. OF PINS PER ROW	Contact Plating	INSULATOR MATERIAL:	LENGTH OF TERMINAL	PACKING
25:2.5mm	1-20P	Full Of Gold A0=0.8u" A1=1u" A2=1.5u" A3=2u" A4=3u" A5=5u" A6=10u" A7=15u" A8=20u" A9=30u"	Semi-gold B0=0.8u" B1=1u" B2=1.5u" B3=2u" B4=3u" B5=5u" B6=10u" B7=15u" B8=20u" B9=30u"	D:LCP	A:PE Bag B:Tape & Reel C:Tube D:Tube+CAP E:Tray
		S1=Ordinary Tin Plated S2=Matte Tin Plated S3=Tin-plated High-temperature			



ITEM	A	B
Standard	2.54	4.5 15
Alternate		

OPERATION		SCALE	Fit
X.X	±0.25	UNIT	MM
X.XX	±0.20	SIZE	A4
X.XXX	±0.10	DESIGN	卢小强
Angle	±3°	CHECK	PART NO.
DIM	TOL	SHEET	1/1
		APPROVE	TITLE:
			Customer No.

上海高霖电子有限公司

卢小强 PART NO. P825-11XXXXDSXXXX1

TITLE: 5.08mm 单排针 塑高2.5 180度

REV	DATE	MODIFICATION DESCRIPTION	CHANGE	APPROVE
1				
2				
3				
4				
5				

Specifications

备注 (Remark)

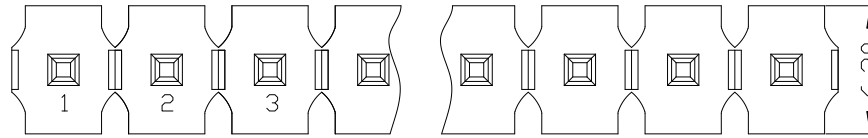
1. 材料 (MATERIAL)

胶芯: LCP+30%G. F UL94V-0, 颜色: 黑色.
 Housing: LCP+30%G. F UL94V-0, Color: Black
 四方针: 黄铜, 镍底30u"MIN, 镀普通锡
 Contact: Brass, ORDINARY TIN PLATED

30u" MIN NICKEL UNDERPLATING OVER ALL

2. 特性 (characteristics):

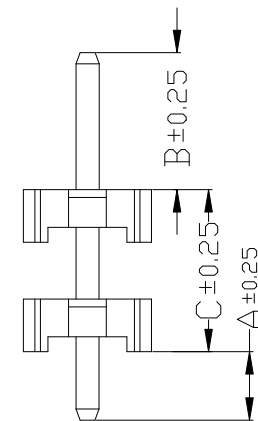
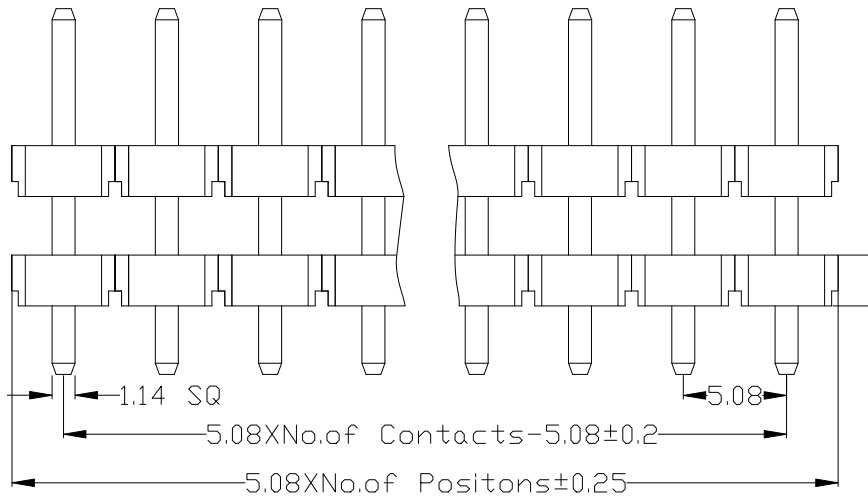
额定电流: 7 AMP
 Raring Current: 7 AMP.
 接触阻抗: 20 mΩ MAX.
 Contact Resistance: 20 mΩ MAX.
 绝缘阻抗: 1000 MΩ MIN.
 Insulating Resistance: 1000 MΩ MIN.
 耐电压: AC 500V.
 Withstanding Voltage: AC 500V.
 温度范围: -40°C to +105°C
 Temperture Range: -40°C to +105°C



Ordering Information

P825-21 XX XX D S XXX AX

HEIGHT OF HOUSING PER ROW 25:2.5mm	NO. OF PINS PER ROW 1-20P	Full of Gold A0=0.8u" A1=1u" A2=1.5u" A3=2u" A4=3u" A5=5u" A6=10u" A7=15u" A8=20u" A9=30u"	Semi-gold B0=0.8u" B1=1u" B2=1.5u" B3=2u" B4=3u" B5=5u" B6=10u" B7=15u" B8=20u" B9=30u"	INSULATOR MATERIAL: D:LCP	LENGTH OF TERMINAL	PACKING A:PE Bag B:Tape & Reel C:Tube D:Tube+CAP E:Tray
		S1=Ordinary Tin Plated S2=Matte Tin Plated S3=Tin-plated High-temperature				



ITEM	A	B	C
Standard	2.54	4.5	15
Alternate			

上海高霖电子有限公司

				OPERATION		SCALE		Fit		PART NO. P825-21XXXXDSXXXX1			
				X.X ±0.25		UNIT		MM					
				X.XX ±0.20		SIZE		A4		DESIGN		PART NO.	
				X.XXX ±0.10		SHEET		1/1		CHECK		TITLE: 5.08mm 单排针 双塑 塑高2.5 180度	
				Angle ±3°		PROJ.		APPROVE		APPROVE		Customer No.	
REV	DATE	MODIFICATION DESCRIPTION		CHANGE	APPROVE	DIM	TOL						