

Specifications

备注(Remark)

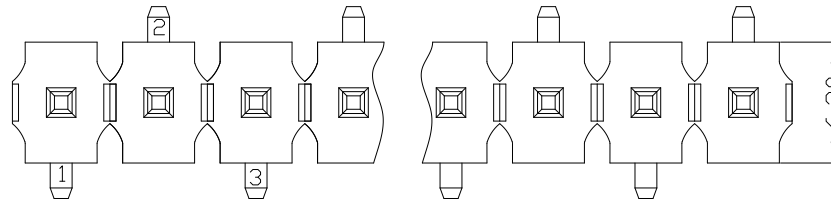
1. 材料 (MATERIAL)

胶芯: LCP+30%G. F UL94V-0, 颜色: 黑色.
 Housing: LCP+30%G. F UL94V-0, Color: Black
 四方针: 黄铜, 镍底30u"MIN, 镀普通锡
 Contact: Brass, ORDINARY TIN PLATED

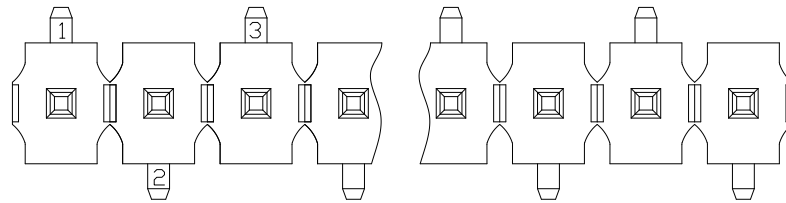
30u" MIN NICKEL UNDERPLATING OVER ALL

2. 特性 (Characteristics):

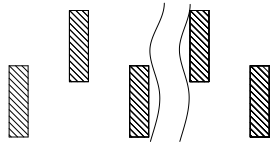
额定电流: 7 AMP
 Raring Current: 7 AMP.
 接触阻抗: 20 mΩ MAX.
 Contact Resistance: 20 mΩ MAX.
 绝缘阻抗: 1000 MΩ MIN.
 Insulating Resistance: 1000 MΩ MIN.
 耐电压: AC 500V.
 Withstanding Voltage: AC 500V.
 温度范围: -40°C to +105°C
 Temperature Range: -40°C to +105°C



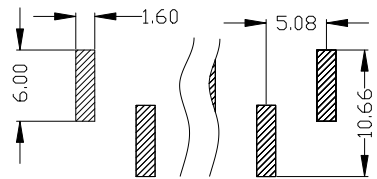
TYPE 1



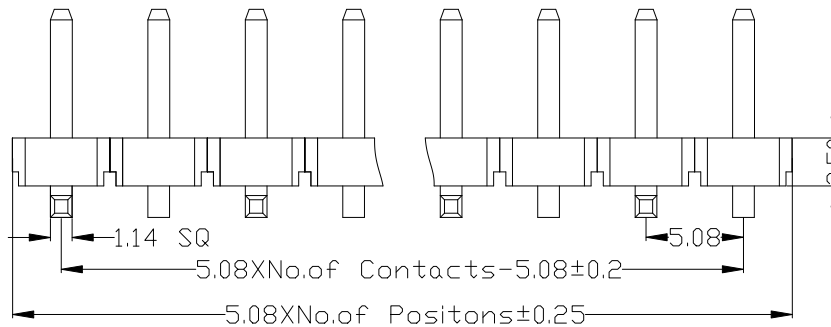
TYPE 2



TYPE 1



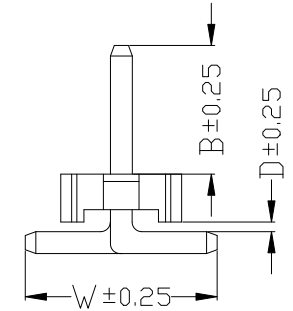
TYPE 2



Ordering Information

P825-11 XX XX D M XXX A X

| | | | | | |
|-------------------|---------------------|--|---|--------------------|---|
| HEIGHT OF HOUSING | NO. OF PINS PER ROW | Contact Plating | INSULATOR MATERIAL: | LENGTH OF TERMINAL | PACKING |
| 25:2.5mm | 1-20P | Full Of Gold A0=0.8u" A1=1u" A2=1.5u" A3=2u" A4=3u" A5=5u" A6=10u" A7=15u" A8=20u" A9=30u" | Semi-gold B0=0.8u" B1=1U" B2=1.5U" B3=2U" B4=3U" B5=5U" B6=10U" B7=15U" B8=20U" B9=30U" | D:LCP | 1:TYPE1 A:PE Bag 2:TYPE2 B:Tape & Reel C:Tube D:Tube+CAP E:Tray |
| | | S1=Ordinary Tin Plated S2=Matte Tin Plated S3=Tin-plated High-temperature | | | |



| ITEM | W | B | D |
|-----------|------|-----|----|
| Standard | 10.0 | 4.5 | 15 |
| Alternate | | | |

上海高霖电子有限公司

| | | | | | | | | | | | |
|-----|------|--------------------------|--|-----------|---------|-------|-----|--------|---------|---|--|
| | | | | OPERATION | | SCALE | | Fit | | 上海高霖电子有限公司 卢小强 PART NO. P825-11XXXXDMXXXXX TITLE: 5.08mm 单排针 塑高2.5 SMT Customer No. | |
| | | | | X.X | ±0.25 | UNIT | | MM | | | |
| | | | | X.XX | ±0.20 | SIZE | A4 | DESIGN | | | |
| | | | | X.XXX | ±0.10 | SHEET | 1/1 | CHECK | | | |
| REV | DATE | MODIFICATION DESCRIPTION | | CHANGE | APPROVE | Angle | ±3° | PROJ. | APPROVE | | |
| | | | | | | DIM | TOL | | | | |

