

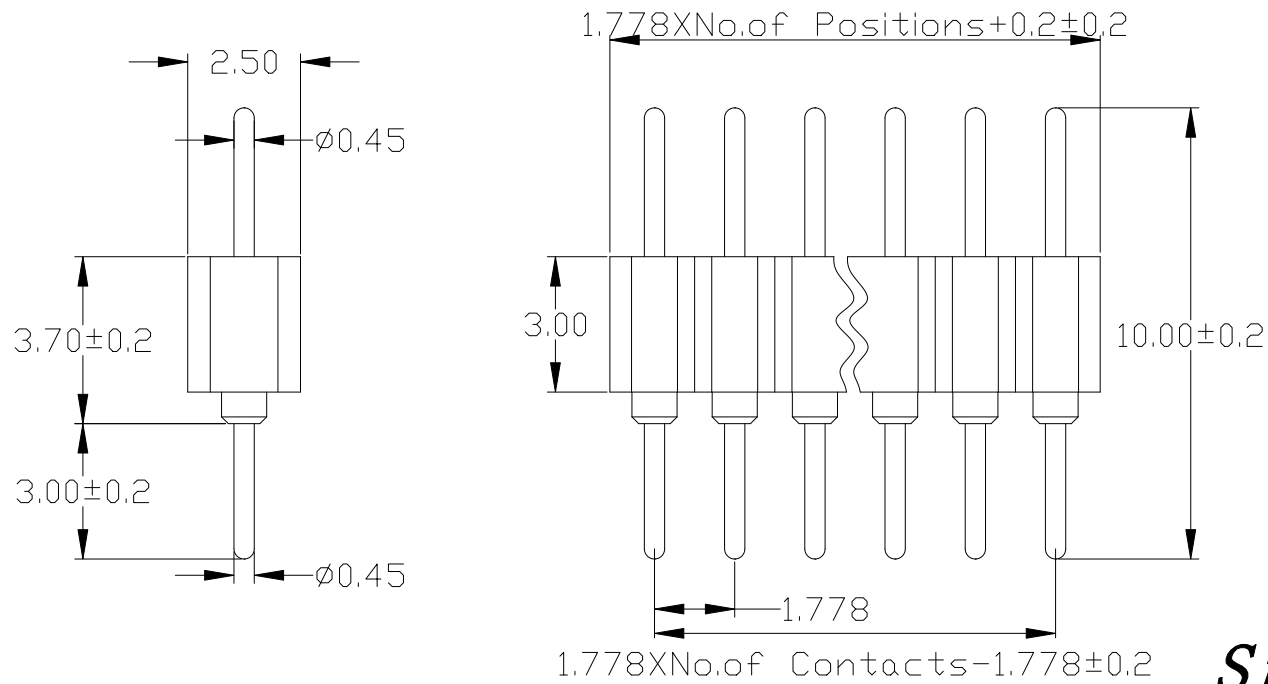
1 2 3 4 5 6 7 8 9 10

Ordering Information

RP430-1 XX 0 X X S

HEIGHT OF HOUSING	1:Single-Row 2: Dual-Row 3:Three Rows of	NO. OF PINS PER ROW	0:No Pitch 1:1.27 2:2.00 3:2.54 4:7.62 5:10.16 6:15.24 7:22.86	A=1u" B=2u" C=5u" D=10u" E=15u" F=30u"	A:PBT B:PA6T C:PA9T D:LCP G:PPS	LENGTH OF TERMINAL
		1~40P				
					S=Ordinary Tin Plated H=Half gold plated Tin	

A
B
C
D
E
F
G
H



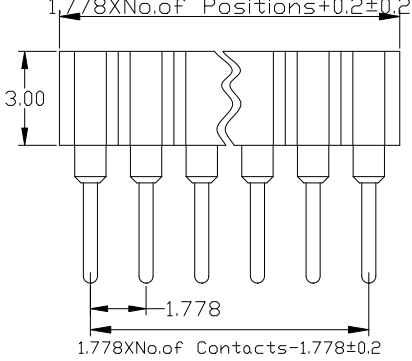
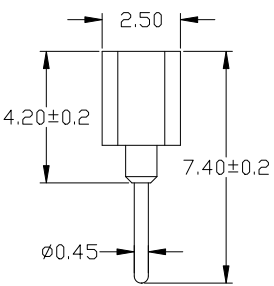
Straight socket connector elevated:
single row grid spacing 1.778mm
Availability from:2 to 32 contacts
Standard number of contacts 21 and 32

Specifications

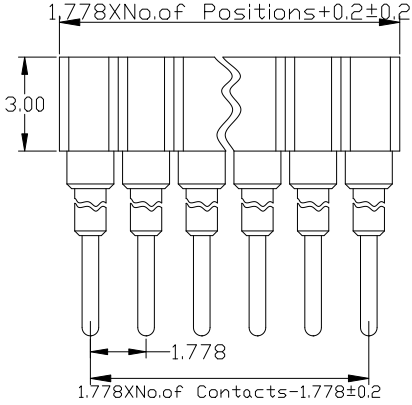
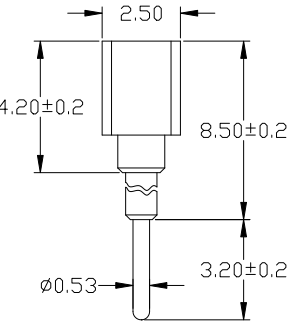
Insulator : Black glass filled polyester PPS-GF30-FR
Fiammability : UL94V-0
Sleeve : Brass CuZn 36Pb3(36000)
Mating pin Ø : 0.45 mm
Mechancial life : min 500 cycles
Rated current : 1Amp
Contact resistance: Max 10mΩ
Dielectric resistance : Min 1000V_{RMS}

				OPERATION		SCALE		Fit		上海高霖电子有限公司			
				X.X	±0.25	UNIT		MM					
				X.XX	±0.20	SIZE	A4	DESIGN	卢小强	PART NO.	RP430-1XXOXXS1001		
				X.XXX	±0.10	SHEET	1/1	CHECK		TITLE:	1.778单排圆孔排针 塑高3.0 180度 L=10.0		
REV	DATE	MODIFICATION DESCRIPTION	CHANGE	APPROVE	DIM	TOL	PROJ.	APPROVE		Customer No.			
1													

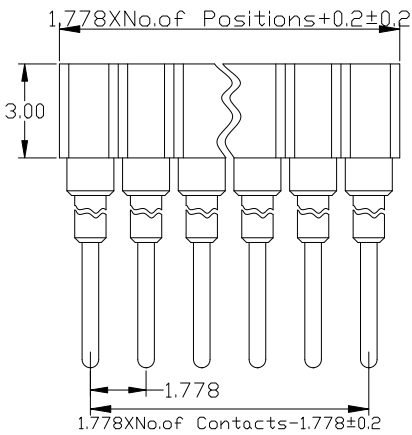
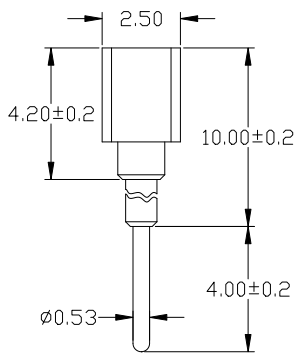
1 2 3 4 5 6 7 8 9 10



Straight socket connector: single row
 grid spacing 1.778mm
 Availability from: 2 to 32 contacts
 Standard number of contacts 21 and 32



Straight socket connector elevated:
 single row grid spacing 1.778mm
 Availability from: 2 to 32 contacts
 Standard number of contacts 21 and 32



Straight socket connector: single row
 grid spacing 1.778mm
 Availability from: 2 to 32 contacts
 Standard number of contacts 32

Ordering Information

RF430-1 XX 0 X X S

HEIGHT OF HOUSING	1: Single-Row 2: Dual-Row 3: Three Rows of	NO. OF PINS PER ROW	1-40P	0: No Pitch	1: 1.27 2: 2.00 3: 2.54 4: 7.62 5: 10.16 6: 15.24 7: 22.86	A: 1u" B: 2u" C: 5u" D: 10u" E: 15u" F: 30u" S: Ordinary Tin Plated H: Half gold plated Tin	A: PBT B: PA6T C: PA9T D: LCP G: PPS	LENGTH OF TERMINAL
-------------------	--------------------------------------------------	---------------------	-------	-------------	------------------------------------------------------------------------------	------------------------------------------------------------------------------------------------------------------	--------------------------------------------------	--------------------

Specifications

Insulator : Black glass filled polyester PPS-GF30-FR
 Flammability : UL94V-0
 Sleeve : Brass CuZn 36Pb3(36000)
 Contact cilp (6 finger) : Beryllium copper (C17200)
 Mating pin Ø: 0.40 to 0.56 mm
 Forces : (polished steel gauge Ø0.46mm)
 -Insertion : 2 N typ.
 -Withdrawal : 1N typ.
 Mechanical life : min 500 cycles
 Rated current : 1Amp
 Contact resistance: Max 10mΩ
 Dielectric resistance : Min 1000V_{RMS}

上海高霖电子有限公司

					OPERATION		SCALE		Fit		上海高霖电子有限公司 卢小强 PART NO. RF430-1XXOXXSXXX1 TITLE: 1.778单排 圆孔排母 塑高3.0 180度 Customer No.		
					X.X	±0.25	UNIT		MM				
					X.XX	±0.20	SIZE	A4	DESIGN				
					X.XXX	±0.10	SHEET	1/1	CHECK				
REV	DATE	MODIFICATION DESCRIPTION			CHANGE	APPROVE	Angle	±3°	PROJ.	APPROVE			
							DIM	TOL					