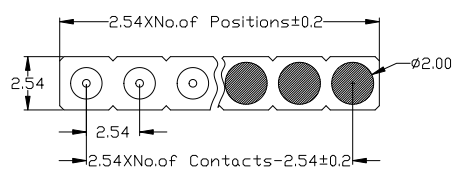
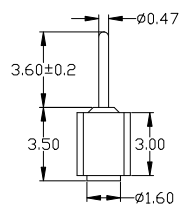


A



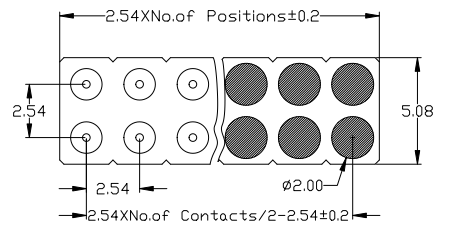
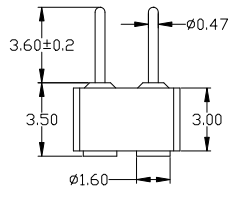
SMT pin connector, low profile
single row, perpendicular mount
with self-levelling floating
contacts
Availability from: 2 to 40 contacts
Standard number of contacts 5, 6, 8, 9,
10, 11, 12, 14, 16, 17, 20, 25, 30, 32 and 40

Ordering Information

RP130-X XX X X X M AXX

| | | | | | | |
|-------------------|------------------|---------------------|-------------|------------------------|---------|--------------------|
| HEIGHT OF HOUSING | 1: Single-Row | NO. OF PINS PER ROW | 0: No Pitch | A=1u" | A: PBT | LENGTH OF TERMINAL |
| 30: 3.0mm | 2: Dual-Row | 1~40P | 1: 1.27 | B=2u" | B: PA6T | |
| | 3: Three Rows of | 2~40P | 2: 2.00 | C=5u" | C: PA9T | |
| | | | 3: 2.54 | D=10u" | D: LCP | |
| | | | 4: 7.62 | E=15u" | G: PPS | |
| | | | 5: 10.16 | F=30u" | | |
| | | | 6: 15.24 | S=Ordinary Tin Plated | | |
| | | | 7: 22.86 | H=Half gold plated Tin | | |

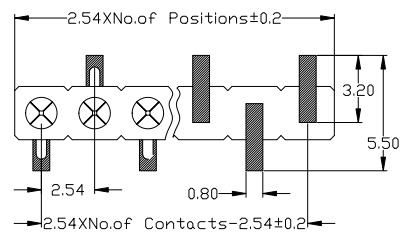
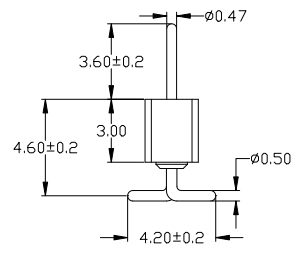
B



SMT pin connector, low profile
double row, perpendicular mount
with self-levelling floating
contacts
Availability from: 4 to 80 contacts
Standard number of contacts 72

C

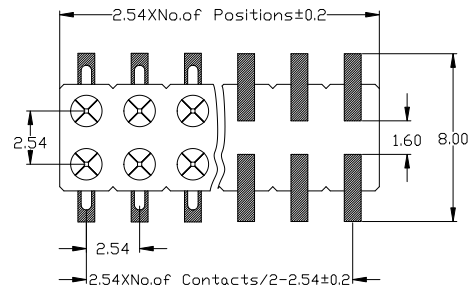
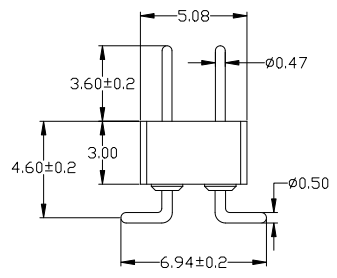
D



SMT pin connector: single row,
perpendicular mount with gull-wing
terminations
Availability from: 3 to 40 contacts
Standard number of contacts 5, 6, 8, 9,
10, 11, 12, 14, 16, 17, 20, 25, 30, 32 and 40

E

F



SMT pin connector: double row,
perpendicular mount with gull-wing
terminations
Availability from: 4 to 80 contacts
Standard number of contacts 20, 56,
60, 64 and 72

Specifications

Insulator : Black glass filled polyester PPS-GF30-FR
Flammability : UL94V-0
Sleeve : Brass CuZn 36Pb3(36000)
Mating pin Ø : 0.47mm
Mechanical life : min 500 cycles
Rated current : 3Amp
Contact resistance: Max 10mΩ
Dielectric resistance : Min 1000V_{RMS}
Coplanary SMT terminations : max 0.1mm(measured on 25 mm long connectors)

H

| | | | | | | | | | | | |
|-----|------|--------------------------|--------|-----------|-------|-------|-----|---------|-----|--------------|--------------------|
| | | | | OPERATION | | SCALE | | Fit | | 上海高霖电子有限公司 | |
| | | | | X.X | ±0.25 | UNIT | | MM | | | |
| | | | | X.XX | ±0.20 | SIZE | A4 | DESIGN | 卢小强 | PART NO. | RP130-XXXXXXMXXX1 |
| | | | | X.XXX | ±0.10 | SHEET | 1/1 | CHECK | | TITLE: | 2.54圆孔排针 塑高3.0 SMT |
| | | | | Angle | ±3° | PROJ. | ☉ | APPROVE | | Customer No. | |
| REV | DATE | MODIFICATION DESCRIPTION | CHANGE | APPROVE | DIM | TOL | | | | | |