

Specifications

备注 (Remark)

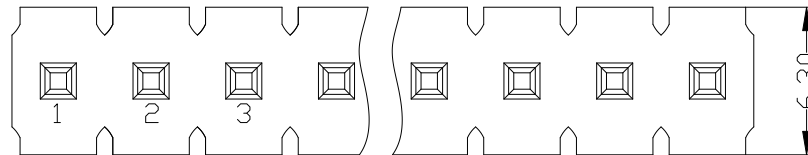
1. 材料 (MATERIAL)

胶芯: LCP+30%G. F UL94V-0, 颜色: 黑色.
 Housing: LCP+30%G. F UL94V-0, Color: Black
 四方针: 黄铜, 镍底30u"MIN, 镀普通锡
 Contact: Brass, ORDINARY TIN PLATED

30u" MIN NICKEL UNDERPLATING OVER ALL

2. 特性 (characteristics):

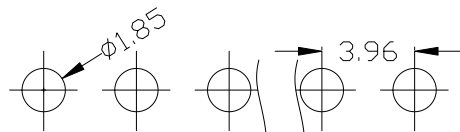
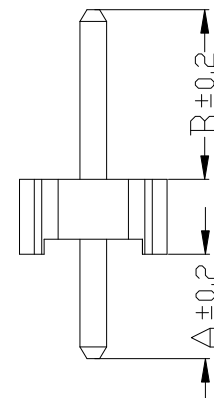
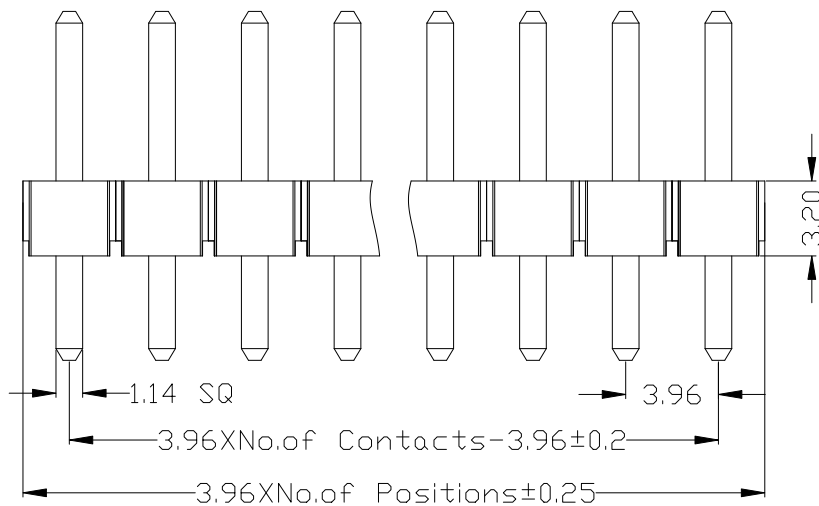
额定电流: 7 AMP
 Raring Current: 7 AMP.
 接触阻抗: 20 mΩ MAX.
 Contact Resistance: 20mΩ MAX.
 绝缘阻抗: 1000 MΩ MIN.
 Insulating Resistance: 1000 MΩ MIN.
 耐电压: AC 500V.
 Withstanding Voltage: AC 500V.
 温度范围: -40°C to+105°C
 Temperature Range: -40°C to+105°C



Ordering Information

P732-11 XX XX D S XXXA X

HEIGHT OF HOUSING	NO. OF PINS PER ROW	Contact Plating	INSULATOR MATERIAL:	LENGTH OF TERMINAL	PACKING
32:3.2mm	1-30P	Full Of Gold	D:LCP		A:PE Bag B:Tape & Reel C:Tube D:Tube+CAP E:Tray
		A0=0.8u"			
		A1=1u"			
		A2=1.5u"			
		A3=2u"			
		A4=3u"			
		A5=5u"			
		A6=10u"			
		A7=15u"			
		A8=20u"			
		A9=30u"			
		S1=Ordinary Tin Plated			
		S2=Matte Tin Plated			
		S3=Tin-plated High-temperature			



ITEM	A	B
Standard	2.54	4.5
Alternate		

					OPERATION		SCALE		Fit		
					X.X	±0.25	UNIT		MM		
					X.XX	±0.20	SIZE	A4	DESIGN		
					X.XXX	±0.10	SHEET	1/1	CHECK		
					Angle	±3°	PROJ.	☉	APPROVE		
REV	DATE	MODIFICATION DESCRIPTION		CHANGE	APPROVE	DIM	TOL				
1								上海高霖电子有限公司			
								卢小强	PART NO.	P732-11XXXXDSXXXX1	
									TITLE:	3.96mm 单排针 塑高3.2 180度	
									Customer No.		

Specifications

备注 (Remark)

1. 材料 (MATERIAL)

胶芯: LCP+30%G. F UL94V-0, 颜色: 黑色.

Housing: LCP+30%G. F UL94V-0, Color: Black

四方针: 黄铜, 镍底30u"MIN, 镀普通锡

Contact: Brass, ORDINARY TIN PLATED

30u" MIN NICKEL UNDERPLATING OVER ALL

2. 特性 (characteristics):

额定电流: 7 AMP

Rating Current: 7 AMP.

接触阻抗: 20 mΩ MAX.

Contact Resistance: 20mΩ MAX.

绝缘阻抗: 1000 MΩ MIN.

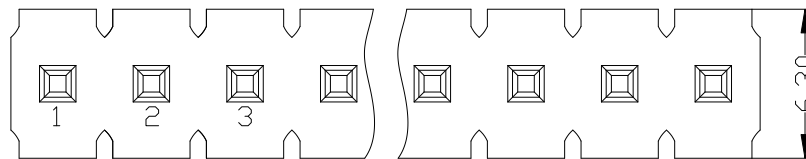
Insulating Resistance: 1000 MΩ MIN.

耐电压: AC 500V.

Withstanding Voltage: AC 500V.

温度范围: -40°C to +105°C

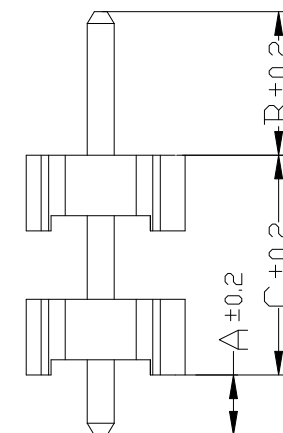
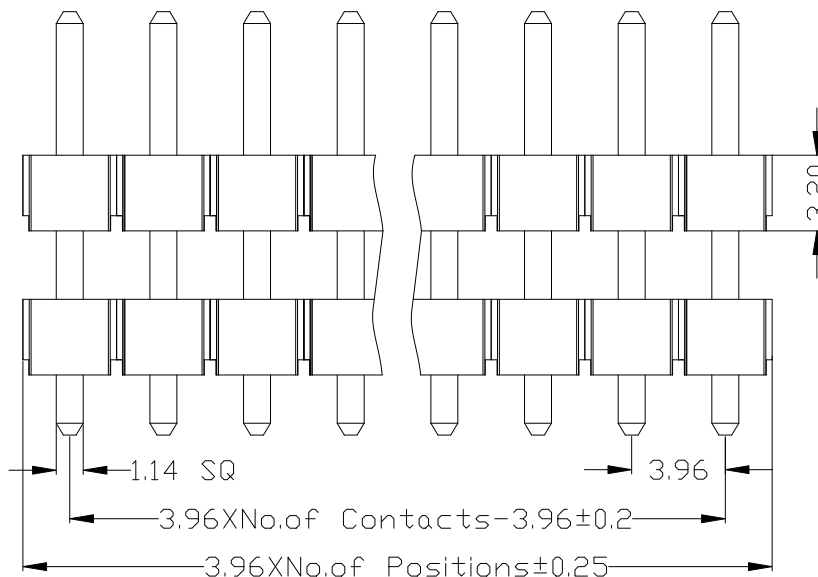
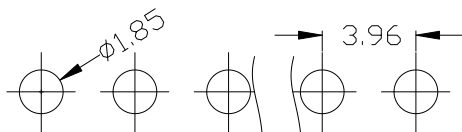
Temperture Range: -40°C to +105°C



Ordering Information

P732-21 XX XX D S XX

HEIGHT OF HOUSING 32:3.2mm	NO. OF PINS PER ROW 1-30P	Contact Plating Full Of Gold A0=0.8u" A1=1u" A2=1.5u" A3=2u" A4=3u" A5=5u" A6=10u" A7=15u" A8=20u" A9=30u"	Semi-gold B0=0.8U" B1=1U" B2=1.5U" B3=2U" B4=3U" B5=5U" B6=10U" B7=15U" B8=20U" B9=30U"	INSULATOR MATERIAL: D:LCP	LENGTH OF TERMINAL	PACKING A:PE Bag B:Tape & Reel C:Tube D:Tube+CAP E:Tray
		S1=Ordinary Tin Plated S2=Matte Tin Plated S3=Tin-plated High-temperature				



Dimension antitheses list			
ITEM	A	B	C
Standard	2.54	4.5	
Alternate			

上海高霖电子有限公司

				OPERATION		SCALE		Fit		卢小强 PART NO. P732-21XXXXDSXXXX1 SHEET 1/1 CHECK TITLE: 3.96mm 单排针 双塑 塑高3.2 180度 APPROVE PROJ.		
				X.X	±0.25	UNIT		MM				
				X.XX	±0.20	SIZE	A4	DESIGN				
				X.XXX	±0.10	SHEET	1/1	CHECK				
REV	DATE	MODIFICATION DESCRIPTION		CHANGE	APPROVE	Angle	±3°	PROJ.				
						DIM	TOL					

Specifications

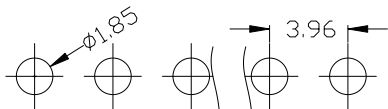
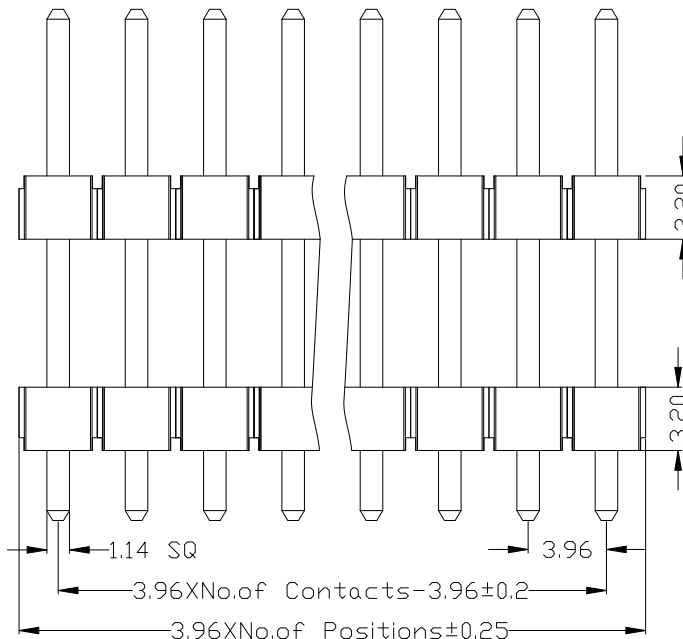
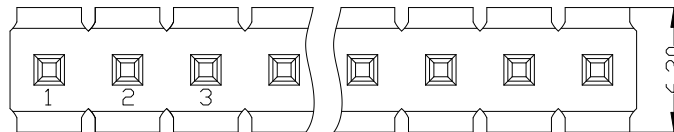
备注 (Remark)

1. 材料 (MATERIAL)

胶芯: LCP+30%G. F UL94V-0, 颜色: 黑色.
 Housing: LCP+30%G. F UL94V-0, Color: Black
 四方针: 黄铜, 镍底30u"MIN, 镀普通锡
 Contact: Brass, ORDINARY TIN PLATED
 30u" MIN NICKEL UNDERPLATING OVER ALL

2. 特性 (characteristics):

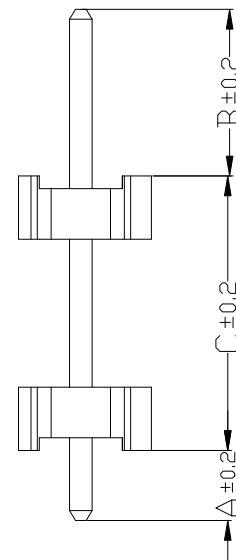
额定电流: 7 AMP
 Raring Current: 7 AMP.
 接触阻抗: 20 mΩ MAX.
 Contact Resistance: 20mΩ MAX.
 绝缘阻抗: 1000 MΩ MIN.
 Insulating Resistance: 1000 MΩ MIN.
 耐电压: AC 500V.
 Withstanding Voltage: AC 500V.
 温度范围: -40°C to +105°C
 Temperature Range: -40°C to +105°C



Ordering Information

P732-21 XX XX D S XX XX

HEIGHT OF HOUSING 32:3.2mm	NO. OF PINS PER ROW 1-30P	Contact Plating		INSULATOR MATERIAL: D:LCP	LENGTH OF TERMINAL	PACKING A:PE Bag B:Tape & Reel C:Tube D:Tube+CAP E:Tray
		Full Of Gold A0=0.8u" A1=1u" A2=1.5u" A3=2u" A4=3u" A5=5u" A6=10u" A7=15u" A8=20u" A9=30u"	Semi-gold B0=0.8U" B1=1U" B2=1.5U" B3=2U" B4=3U" B5=5U" B6=10U" B7=15U" B8=20U" B9=30U"			
		S1=Ordinary Tin Plated S2=Matte Tin Plated S3=Tin-plated High-temperature				



Dimension antitheses list			
ITEM	A	B	C
Standard	2.54	4.5	
Alternate			

上海高霖电子有限公司

卢小强 PART NO. P732-21XXXXDSXXXX2
 TITLE: 3.96mm单排针 双塑 塑高3.2 180度 反塑胶
 Customer No.

REV	DATE	MODIFICATION DESCRIPTION	CHANGE	APPROVE	OPERATION		SCALE		Fit
					X.X	±0.25	UNIT	MM	
					X.XX	±0.20	SIZE	A4	DESIGN
					X.XXX	±0.10	SHEET	1/1	CHECK
					Angle	±3°	PROJ.	☉	APPROVE
					DIM	TOL			