

# Ordering Information

RF130-2 XX X X X M XXX

C 2

HEIGHT OF HOUSING 30:3.0mm  
 1:Single-Row  
 2:Dual-Row  
 3:Three Rows of 2~40P

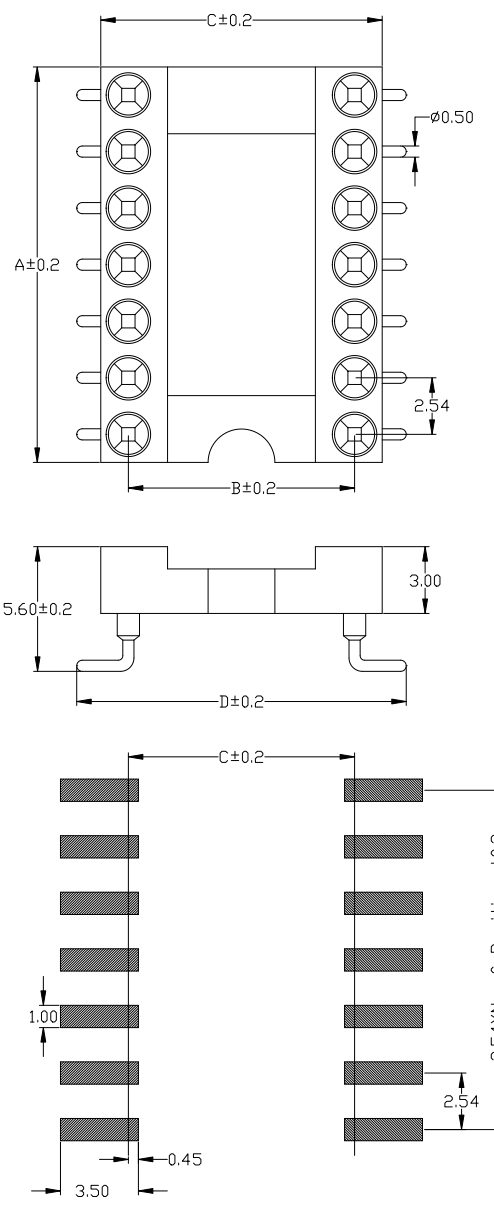
NO. OF PINS PER ROW  
 0:No Pitch  
 1:1.27  
 2:2.00  
 3:2.54  
 4:7.62  
 5:10.16  
 6:15.24  
 7:22.86

A=1u"  
 B=2u"  
 C=5u"  
 D=10u"  
 E=15u"  
 F=30u"  
 S=Ordinary Tin Plated  
 H=Half gold plated Tin

A:PBT  
 B:PA6T  
 C:PA9T  
 D:LCP  
 G:PPS

LENGTH OF TERMINAL

A  
B  
C  
D  
E  
F  
G



See page 33	No. of Positions	A	B	C	D
fig. 1	6	7.6	7.62	10.1	12.26
fig. 2	8	10.1	7.62	10.1	12.26
fig. 3	10	12.6	7.62	10.1	12.26
fig. 4	12	15.2	7.62	10.1	12.26
fig. 5	14	17.7	7.62	10.1	12.26
fig. 6	16	20.3	7.62	10.1	12.26
fig. 7	18	22.8	7.62	10.1	12.26
fig. 8	20	25.3	7.62	10.1	12.26
fig. 9	22	27.8	7.62	10.1	12.26
fig. 10	24	30.4	7.62	10.1	12.26
fig. 11	28	35.5	7.62	10.1	12.26
fig. 12	20	25.4	10.16	12.6	14.80
fig. 13	22	27.8	10.16	12.6	14.80
fig. 14	24	30.4	10.16	12.6	14.80
fig. 15	28	35.5	10.16	12.6	14.80
fig. 16	32	40.6	10.16	12.6	14.80
fig. 17	24	30.5	15.24	17.7	19.88
fig. 18	28	35.5	15.24	17.7	19.88
fig. 19	32	40.6	15.24	17.7	19.88
fig. 20	36	45.7	15.24	17.7	19.88
fig. 21	40	50.8	15.24	17.7	19.88
fig. 22	42	53.3	15.24	17.7	19.88
fig. 23	48	60.9	15.24	17.7	19.88

# Specifications

Insulator : Black glass filled polyester PPS-GF30-FR  
 Flammability : UL94V-0  
 Sleeve : Brass CuZn 36Pb3(36000)  
 Contact cilp (4 finger) : Beryllium copper (C17200)  
 Mating pin Ø : 0.40 to 0.56mm  
 Forces: (polished steel gauge Ø0.43mm)  
 -Insertion : 2 N typ.  
 -Withdrawal: 1 N typ.  
 Mechancial life : min 100 cycles  
 Rated current : 1Amp  
 Contact resistance: Max 10mΩ  
 Dielectric resistance : Min 1000V<sub>RMS</sub>  
 Coplanariny SMT  
 terminations : max 0.1mm

					OPERATION		SCALE		Fit		上海高霖电子有限公司 卢小强      PART NO. RF130-2XXXXXXMXXXC2 TITLE: 2.54圆孔 IC座 塑高3.0 SMT Customer No.		
					X.X	±0.25	UNIT		MM				
					X.XX	±0.20	SIZE	A4	DESIGN				
					X.XXX	±0.10	SHEET	1/1	CHECK				
REV	DATE	MODIFICATION DESCRIPTION		CHANGE	APPROVE	Angle	±3°	PROJ.	⊕	APPROVE			
					DIM	TOL							
1		2	3	4	5	6	7	8	9	10			