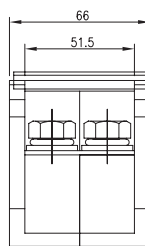
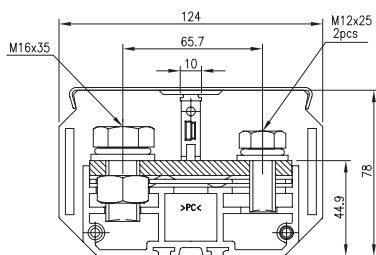


RT 600-21

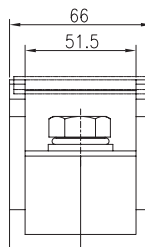
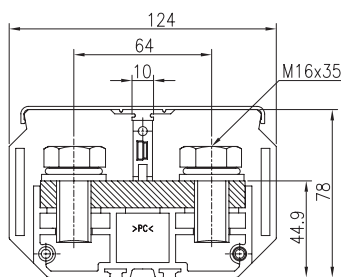


定格 Rating	AC600V 600A
適合電線 Applicable Wire	M16:325mm ² M12:150mm ² x2

適合附件 Accessories

銘板 Marking Plate	LB5
透明蓋 Cover	CO 33
鋁軌 Aluminum Rail	RA3
固定片 End Clamp	PR3-24-1SY (軌道式/Rail Type) PR4-25Y (連結式/Modular Type)

RT 800

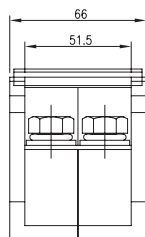
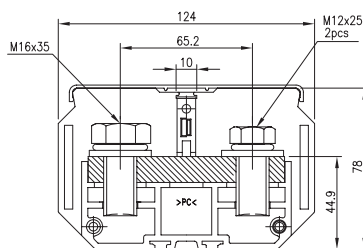
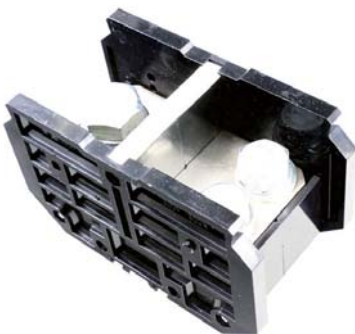


定格 Rating	AC600V 800A
適合電線 Applicable Wire	250mm ² x2

適合附件 Accessories

銘板 Marking Plate	LB5
透明蓋 Cover	CO 33
鋁軌 Aluminum Rail	RA3
固定片 End Clamp	PR3-24-1SY (軌道式/Rail Type) PR4-25Y (連結式/Modular Type)

RT 800-21

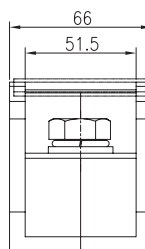
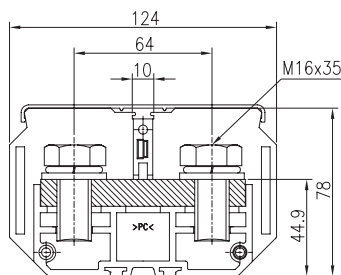


定格 Rating	AC600V 800A
適合電線 Applicable Wire	M16:250mm ² x2 M12:250mm ² x2

適合附件 Accessories

銘板 Marking Plate	LB5
透明蓋 Cover	CO 33
鋁軌 Aluminum Rail	RA3
固定片 End Clamp	PR3-24-1SY (軌道式/Rail Type) PR4-25Y (連結式/Modular Type)

RT 1000



定格 Rating	AC600V 1000A
適合電線 Applicable Wire	325mm ² x2

適合附件 Accessories

銘板 Marking Plate	LB5
透明蓋 Cover	CO 33
鋁軌 Aluminum Rail	RA3
固定片 End Clamp	PR3-24-1SY (軌道式/Rail Type) PR4-25Y (連結式/Modular Type)